

KLOPP[®]

INTERNATIONAL, INC.

Operating Manual And Service Information

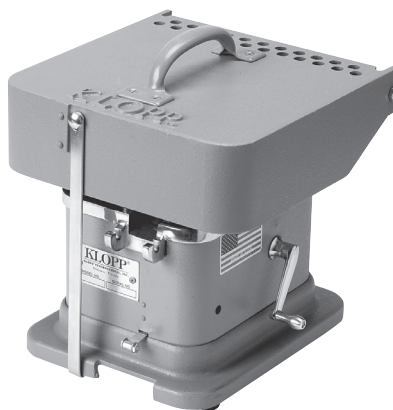
Coin Counters - Models CM, CE, CECR, KK, CMB, CEB, D2, and DE

Please read these operating instructions carefully. They are brief but very important. Please complete the attached warranty card and mail to us. This will ensure you are entered in Klopp's company database and are eligible for future service and conversion information.

This product is covered by a ONE-YEAR LIMITED FACTORY WARRANTY. Please see the "Complete Warranty Statement" inside for details, limitations and your responsibility under the warranty. If your Complete Warranty Statement has been misplaced, call or email directly to Klopp International, Inc., for a replacement.

KLOPP[®]
INTERNATIONAL, INC.

1567 North Bend Dr
Tarpon Springs, FL 34689
Ph: 813-855-6789



Model CM



Model CE

KLOPP[®]

INTERNATIONAL, INC.

You can Count On KLOPP....

Our Mission

KLOPP International, Inc has been a U.S. manufacturer of high quality, economically priced coin handling equipment since 1931. Our superb reputation for accuracy, rugged dependability and almost no service has been justifiably earned through the test of time.

We service a wide variety of industries including, but not limited to, vending, amusement, car wash, laundry, schools, banks, restaurant/bar and convenience stores. Our mission is to continually improve the quality of our products and services to meet our customers' requirements and needs.

Our primary goal is the satisfaction of our customers. We also aim to achieve sufficient profits for the continued growth of the company and the security of its employees, distributors and customers. To achieve these goals we continually strive to produce the highest quality products in the industry.

ONE-YEAR LIMITED FACTORY WARRANTY

Complete Warranty Statement

KLOPP International, Inc. (manufacturer) warrants each product of its manufacture to be free from defects in material and workmanship if properly operated and serviced according to manufacturer's Operating Instructions.

Manufacturer's obligation under this warranty is limited to correcting without charge for labor or material at its factory any machine, components, or parts thereof which are returned to its factory, transportation charges prepaid, within one year from the date of original purchase of the machine, examination of which discloses to the manufacturer's satisfaction that the machine, components, or parts thereof are defective.

Each machine shipped from the manufacturer's factory contains Operating Instructions. Before shipping a machine, component, or parts thereof to the manufacturer for warranty repair, the owner must be certain that the source of difficulty could not be corrected by performing one or more of the procedures described in the Operating Instructions or by contacting KLOPP directly for technical support. If manufacturer finds that the source of difficulty could have been corrected by procedures contained in the Operating Instructions or technical support, the manufacturer reserves the right to make its regular charge for any work performed.

This warranty does not apply to any machine, component, or part thereof which must be replaced because of normal wear and tear or lack of maintenance, which have been subject to misuse, negligence, accident or which have been repaired or altered outside of the manufacturer's factory, or which contain parts not manufactured or supplied by the manufacturer. Manufacturer is not liable for any loss, damages (including consequential damages) or expense caused from or related in anyway to the use of its products or from any other cause. This warranty supersedes and is given in lieu of all other express or implied warranties, including warranties of merchantability and fitness for a particular purpose. No person or entity is authorized to give or alter any warranties on behalf of the manufacturer. Manufacturer reserves the right to make design and/or operational changes in its products or parts thereof without obligation to incorporate these changes in products previously produced.

OPERATING INSTRUCTIONS

PLEASE READ THESE INSTRUCTIONS THOROUGHLY BEFORE OPERATING YOUR KLOPP COUNTER:

A. COINS PROCESSED — KLOPP Coin Counters count, wrap and bag \$1, 25¢, 10¢, 5¢, and 1¢ U.S. coins, as well as the most popular token sizes: 1", .984, .900, .882, and .800. - one denomination at a time - they **will not** count mixed coins. KLOPP Counters can also be converted to count the following Canadian coins: \$2, \$1, 25¢, 10¢, 5¢ as well as the 1 1/8" token. Canadian machines **will not** count dimes or pennies. Models CMB and CEB count and bag "One Coin" only, which is set at the factory. They **will not** wrap.

B. WRAPPING TUBES — Your KLOPP was shipped with one of the following sets of tubes: either a set of Wrapping Tubes including the 25¢, 10¢, and 5¢ -OR- a set of (1) Wrapping Tube and (1) Universal Bagging Tube. Additional tubes for wrapping include the \$1 and 1¢ coins, and 1", .984 and .900/.882 tokens (.800 tokens can be wrapped using the 5¢ Wrapping Tube). All Wrapping Tubes, as well as the Universal Bagging Tube, may be ordered directly from the KLOPP factory.

C. CRIMPHEADS — The Model CECR ships with crimpheads to crimp wrappers closed. The Model CECR1 ships with (1) crimphead of your choice. The Model CECR4 ships with (4) crimpheads for 25¢, 10¢, 5¢, and 1¢. Additional Crimpheads are available for .50¢, \$1, and Canadian \$2.

D. 100% INSPECTION — Your KLOPP is 100% inspected at the factory and has been operated with all denominations of coins and tokens. You should receive years of trouble-free service. On the very remote chance that you should have a problem or even a question, please call "KLOPP Service" 800-356-9080.

E. TO OPERATE YOUR KLOPP, DO THE FOLLOWING:
(For Models CMB, and CEB, see Step I)

1. Pour a quantity of the same coins (no mixed coins) into the 3-sided coin tray.
2. Turn the Denomination Selector Knob to the appropriate setting for your coins: \$, T, QT, NT, P or D. This will set the proper height and width in the counting track for the coins you are processing. For tokens, use the T setting for 1" and .984 sizes, the QT setting for .900 size, and the NT setting for .882 and .800 sizes

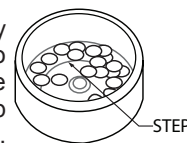
Canadian CM-C2 and CE-C2 Counters and the 1-1/8" Token Counters use the Denomination Selector Settings below. These counters **will not** count the Dime or Penny.

TO COUNT	SETTINGS
\$2 Toonie Coin & 1-1/8"/1.073 Token	1/8
\$1 Loonie Coin & 1" Token	\$T
.984 Token	•
Quarter & .900 Token	QT
Nickel & .882 Token	NT
.800 Token	T

3. By turning the Coin Stop Knob, coin stops can be set at 20, 25, 40 or 50. An automatically actuated coin stop blocks the flow of coins when the desired quantity is reached. Set the Coin Stop Knob on 40 for quarters or nickels, 50 for dimes or pennies, or 25 for dollars. Setting the Coin Stop Knob on C will allow a continuous flow of coins into a bag or bucket. Total counts are recorded on a rugged, mechanical, 5-digit, resettable meter.
4. Set the meter at "0". (**IMPORTANT — READ STEP F NOW!**)
5. To COUNT AND WRAP - Hook on the proper coin wrapping tube and insert an empty coin wrapper (**READ STEP G**).

6. If **manual** model, push down firmly on the Coin Stop Knob and release. Then turn the crank to start coin flow. If **electric** model, turn "ON" the motor, push down firmly on the Coin Stop Knob and release to start coin flow.
7. HOW TO "IN FEED" You must "in feed" the PROPER quantity of coins from the large 3-sided coin tray onto the round disc in order to get a speedy, uninterrupted flow into a wrapper or bag. Over-filling the disc slows the "out speed" and may cause jamming if coins are worn.

TO PROPERLY "IN FEED" Continuously hand rake the coins from the tray onto the disc. At all times, you should be able to see at least a small portion of the step in the disc as it rotates (see drawing).



8. Once the machine counts the number of coins you set it for, the coin flow will stop. You can then remove the filled coin wrapper and fold the open end closed. Insert another empty coin wrapper and press down on the Coin Stop Knob to release the next flow of coins. Repeat as necessary until all coins are counted and wrapped.
9. To COUNT AND BAG - Replace the wrap tube with our Universal Bagging Tube. Set the Coin Stop Knob on "C" for continuous flow, and run the machine. Always use a Universal Bagging Tube when bagging coins or tokens. **NEVER USE A WRAPPING TUBE TO BAG. IT WILL JAM.**
10. To CRIMP WRAPPERS CLOSED (Model CECR only) - Insert the proper coin crimphead into the black receiver on the right-side of the machine. "Push and Twist" to ensure crimping head is located and locked in place. Fill a "flat" or "gunshell" style wrapper with the proper amount of coins. Press the filled coin wrapper firmly against crimphead until the wrapper is tight and a rolled seal has been formed. Press at a steady rate (2-3 seconds). **DO NOT FORCE.** Let the crimper do the work.

F. CLEARING THE COUNTING MEMORY — IMPORTANT INFORMATION

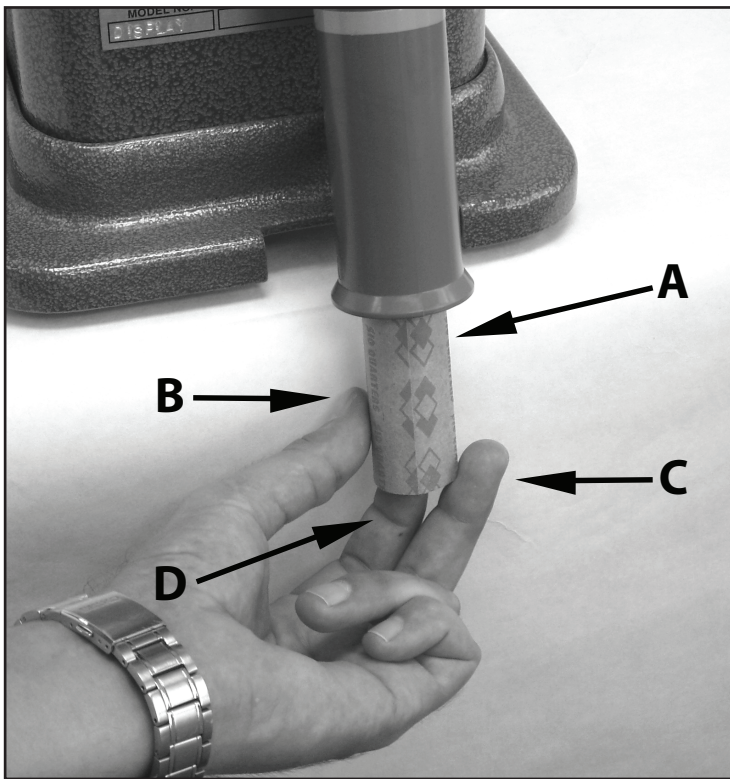
Before counting and wrapping EACH DENOMINATION, it is necessary to CLEAR THE COUNTING MECHANISM MEMORY. If you did not have the exact number of coins/tokens on the last roll you counted, or changed the stop from "C" continuous to a numerical stop "20, 25, 40, 50", your KLOPP will deliver only the "balance due" on the first roll at the next counting.

To CLEAR YOUR MEMORY, do the following:

1. Prepare to count as you normally would (See E "To Operate Your KLOPP").
2. Do not insert a wrapper as you normally would. Instead, hold your hand under the tube.
3. Turn "ON" the motor or turn the crank and release the flow of coins/tokens by depressing the Coin Stop Knob. When the "balance due" from the previous count is reached, no more coins/tokens will flow into the tube. Return the handful of coins/tokens to the hopper.
4. Reset the meter to zero and insert a wrapper in the tube.
5. Depress the Coin Stop Knob and you will now receive a full roll of coins/tokens.

For example, let's say you're counting a batch of quarters and you've set your Coin Stop Knob at 40. You come to the end of the batch, and the last group of coins is only 25 pieces. You stop, because you're done, but the machine is still waiting for 15 more pieces. The next time you run the machine, no matter the setting, it will only count out those last 15 coins/tokens, and then it will stop. You would dump those 15 pieces back into the hopper, and reset the meter to zero, and then proceed as normal from step E-5.

G. HOW TO USE A PAPER COIN WRAPPER IN YOUR KLOPP WRAPPING TUBE.



Insert the paper coin wrapper UP into the nylon wrapping tube 1/3 the length of the wrapper (A).

Grasp the bottom of the wrapper with your left thumb (B) on one side and your middle finger (C) on the other side. At the same time, insert your index finger (D) just slightly up into the bottom of the wrapper so that the 1st coin will land flat on the tip of finger. Be sure that the wrapper is held in a round configuration. **DO NOT PINCH IT.** If the 1st coin does not land flat on your finger, very quickly wiggle your finger and it will lay flat. If the first coin lands flat, all others will follow. When the wrapper is full, the counter will automatically stop dispensing coins. Grasp the wrapper firmly and slide it down and out of the nylon wrapping tube. Fold both ends. **THE PRECEDING IS ONLY AN EXAMPLE. PLEASE USE ANY FINGER ARRANGEMENT THAT IS COMFORTABLE FOR YOU.**

NEVER insert the paper wrapper more that 1/2 its length into the tube. If you do, the top edge of the wrapper may become bent over by falling coins and create a jam in the wrapping tube. The small ledge you see if you look up into the nylon tube is created by the manufacturing process and is NOT a stop for coin wrappers. If coins continue to jam at the top of the paper wrapper or if the wrapper does not fit reasonably smooth against the wrapping tube wall, the wrapper may be defective. Use a different brand of paper wrapper.

TO PREVENT JAMS, YOU SHOULD NEVER USE A NYLON WRAPPING TUBE AS A CONTINUOUS FLOW BAGGING TUBE. OUR UNIVERSAL BAGGING TUBE, WITH A MUCH LARGER INTERNAL DIAMETER, IS TO BE USED FOR BAGGING.

H. POSSIBLE ADJUSTMENTS

There are only three adjustments that should ever be necessary on your KLOPP. These are: (1) Adjusting the tension on the combination tray leg/locking arm; (2) Adjusting the space between the lower discharge wheel and upper discharge roller; (3) Removing a jammed coin.

1. **Adjusting the tension on the combination tray leg/locking arm** — Note that the tray leg is also used to lock the coin tray in its closed position while transporting your KLOPP from one location to another. From time to time, tension on this locking arm may become reduced through use. To increase the tension on the locking arm, note the small rubber tipped support arm located on the rear inside of the coin tray. When the tray is closed, this support arm fits against the top of your KLOPP counter immediately in front of the meter. To increase the tension on the tray leg/locking arm, remove rubber tip, then grasp the arm with a large pair of pliers and gently bend it slightly upward. To decrease the tension on the tray leg/locking arm, bend the support arm downward.
2. **Adjusting the space between the lower discharge wheel and the upper discharge roller** — Note that after leaving the hopper, coins/tokens are moved to the tube by passing between the lower discharge wheel and the upper discharge roller. (Only a small portion of the lower discharge wheel is visible where it protrudes upward in the coin track.) The distance between the wheel and roller is set at the factory and locked in place. The black rubber-like material which contacts the coins/tokens is a special formula to give years of wear-free service. No adjustments should be necessary until after millions of coins/tokens have passed through your KLOPP.

With years of use some wear may occur on the surface of the roller or wheel. This may cause coins not to be transported in a perfectly even flow. If this ever occurs, do the following:

Face the front of your KLOPP and locate the small hole on the side to your right. Turn your KLOPP upside down so that you can see the mechanism from the bottom. Insert a small screwdriver in the hole described above and locate the lower discharge wheel adjustment screw head. **DO NOT TURN THE SCREW HEAD, YET.** Now locate the slotted set screw which holds the lower discharge wheel screw in position. Loosen the set screw by turning it counter-clockwise 1/4 turn — **NO MORE.**

Turn you KLOPP right side up again. Set the Denomination Selector Knob at D. Insert the screwdriver in the hole described above. Turn the screwdriver and note that as you do the lower discharge wheel moves slightly up and down. Move it upward until it is the distance of one-half the thickness of a dime from the upper discharge roller.

Turn your KLOPP upside down and retighten the set screw by turning clockwise. Test your KLOPP for a smooth flow of dimes. Be sure to test all denominations not just dimes.

3. **Removing a jammed coin** — If a mutilated or bent coin becomes stuck in the track or under the shield, do the following:

If a coin jams, **YOU MUST** turn "OFF" the motor. If you do not, you may damage the rotating disc and/or burn up the motor. Turn the Denomination Selector Knob to "\$" which will open the height and width of the track to the maximum opening. Remove the jammed coin by turning the crank in a reverse direction or rotating the disc by hand on an electric counter when the motor is shut off.

- I. **TO OPERATE MODELS CMB AND CEB, DO THE FOLLOWING:**

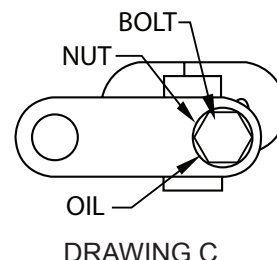
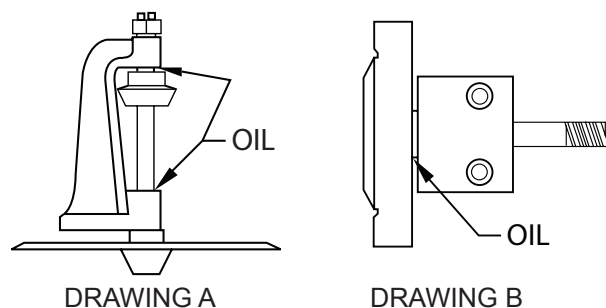
Hook on our Universal Bagging Tube and fasten a coin bag using the ring at the bottom of the tube. Once the bag is fastened, pour coins into the 3-sided coin tray and run machine following the "Proper In-Feed" procedure. (See Section E, #7)

SERVICE INFORMATION

CLEANING YOUR KLOPP — To keep your KLOPP in good working order, it is necessary to periodically CLEAN the rotating disc and the coin track, plus the black upper and lower discharge rollers and the white nylon drive wheel. This can be accomplished by the use of a soft rag moistened with rubbing alcohol. **NEVER USE WD40. CAUTION** — Be careful that all solvent is dry before turning on electric models. Also, do not allow lint or foreign matter to build up in the coin track or around the starwheel which turns as each coin passes it to be counted.

LUBRICATING YOUR KLOPP — Your KLOPP was lubricated at the factory with a few drops of oil. If it ever begins to make a squealing or grinding sound, it needs to be relubricated. To do so, follow the directions below:

- 1. FOR MANUAL MODELS CM & D2** — Turn your KLOPP upside down. Put two drops of “3-in-1” (or equal) oil on the rotating shafts at the locations shown in Drawings A & B below. **DO NOT OVER OIL.** Make sure to wipe off excess oil with a clean cloth and alcohol prior to running coins through the machine. Note: Drawing B is for machines built after 2004.
- 2. FOR ELECTRIC MODELS CE, CECR, KK & DE** — Turn your KLOPP upside down. Put two drops of “3-in-1” (or equal) oil on the rotating shafts at the locations in Drawing A. See drawing C. Loosen the nut 1/4 turn (11/16 wrench needed) and then remove the hexhead bolt leaving the nut in position on the bolt. Look through the hole in which the bolt was located. You will see an oil retaining wadding. Put 18 drops of Waylube oil on top of the wadding. Replace the bolt and retighten nut. Leave the counter upside down for a few minutes so that the oil can work its way down through the wadding and onto the shafts. **DO NOT OVER OIL.**
- 3. DISC INSERTS FOR ALL MODELS** — After cleaning the rotating disc (See “Cleaning your KLOPP”) remoisturize the Black Disk Inserts on the rotating disc with “3-in-1” (or similar) oil. Place 1-2 drops of oil on each insert and let absorb overnight. **Important:** Do not over oil and make sure to wipe off excess oil from the disc prior to operating your machine.



REPAIRS AND REPLACEMENT PARTS — KLOPPS are very heavy duty and almost literally “last forever”. Our one-year limited factory warranty on both parts and labor, when returned to the factory prepaid, undamaged and unaltered, gives full protection for 1 year from the date of original purchase.

Eventually, some parts will probably wear. It may take 3 years or 10 years but someday it will happen. To replace a worn part you have 2 choices of action.

- 1. REPAIR SERVICE** — Call KLOPP at **800-356-9080** for shipping instructions - OR - visit our website at www.KloppCoin.com to download our Service Information Sheet. This sheet provides detailed information on our Repair Service.

NOTE: Please include a **Service Data Sheet** when sending in your KLOPP machine for repair. This will ensure you have provided the information that is needed to process your repair in a timely manner.

- 2. REPLACEMENT PARTS** — To order replacement parts, call us at 800-356-9080. We will be happy to assist you to ensure you are ordering the proper part. Parts diagrams, photos, and descriptions may be viewed and/or downloaded on our website at www.KloppCoin.com. When ordering, please provide the Model and Serial Number of your KLOPP.

WARNING

Wipe off all excess oil. Be sure oil does not get on either the large black or white wheels or the belt from the motor to the pulley. To remove excess oil, wipe off these parts with a clean cloth lightly dampened with alcohol.

REMEMBER:

IF YOU HAVE A PROBLEM OR JUST A QUESTION ABOUT YOUR KLOPP, CALL KLOPP CUSTOMER SERVICE AT

800-356-9080



KLOPP[®]

INTERNATIONAL, INC.

1567 North Bend Dr
Tarpon Springs, FL 34689
Ph: 813-855-6789

www.KloppCoin.com
sales@kloppcoin.com